

NEW PROBE FIBER CONNECTORS

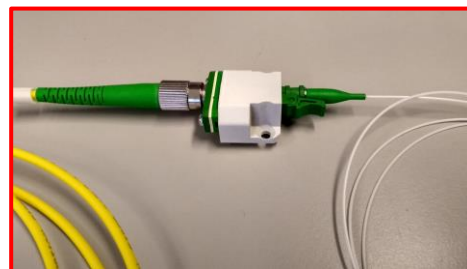
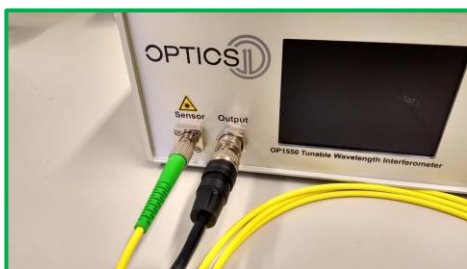
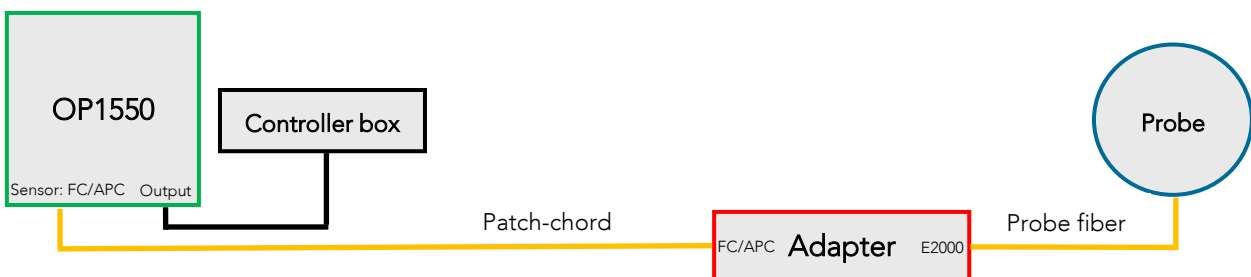
Dear Piuma-user,

As we strive to improve the reliability and ease-of-use for all aspects of our equipment, we introduce a new fiber connector (E2000) on the probe side, which will replace our existing connectors (FC/APC).

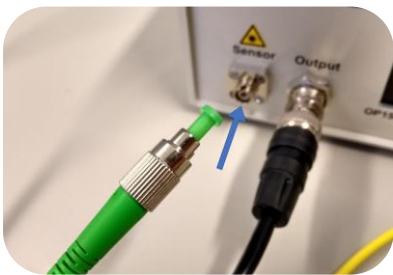
The new connector has a self-closing mechanism, making it less fragile and less probable to become contaminated. All new probes are shipped with an adapter & patch-chord to connect the new connector to the OP1550 Interferometer. The connection scheme can be found in the figure below. Please note that probes with old connectors will still be usable.

For more detailed explanation, please read the Piuma step-by-step adapter & patch-chord installation guide on the next page.

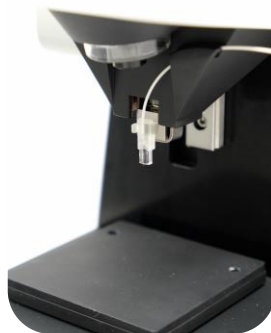
New optical fiber connection scheme:



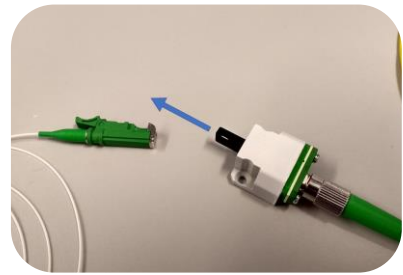
Piuma – adapter installation



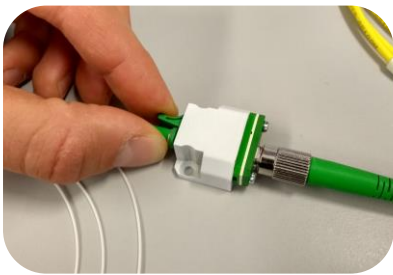
1. Connect one end of the patch-chord (old connector) to the OP1550



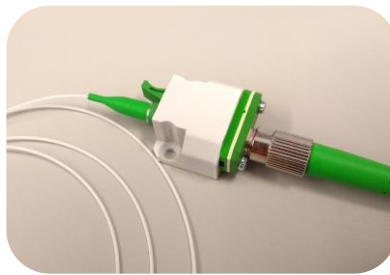
2. Plug the probe to the Piuma probe holder



3. Remove the black cap from the adapter & patch-chord



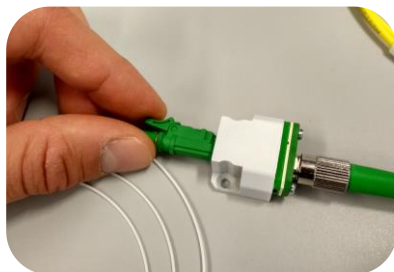
4. Insert the new connector to the adapter



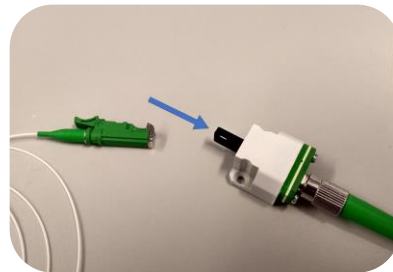
5. Make sure the connector clicks in place



6. Doublecheck the fiber connections before starting the system



7. To disconnect the probe again, gently push the green lever of the new probe connector



8. Insert the black cap back into the adapter to avoid any contamination

For more information or help please contact our support team via support@optics11.com.

